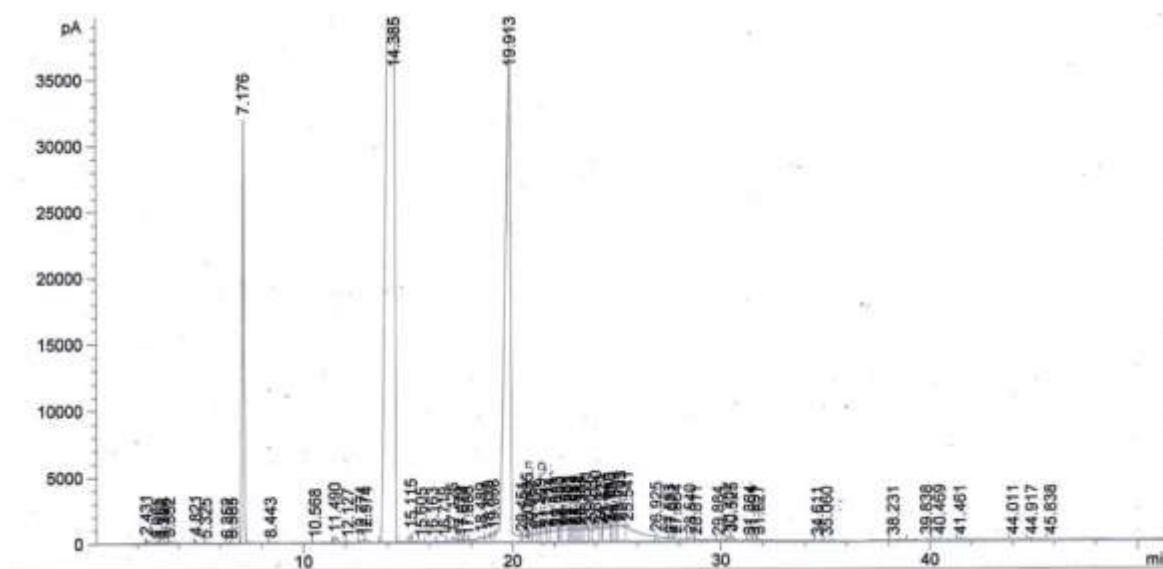


Shemsa Naturals

GC/MS Raporu

FID1 A Front Signal (2021 BERGAMOT OIL 18001.D)



Area Percent Report

Multiplier : 1.0000

Dilution : 1.0000

Use Multiplier & Dilution Factor with ISTDs

Signal 1: FID1 A, Front Signal

Peak #	Red Time (min)	Type	Width (min)	Area (pA*s)	Height (pA)	Area	NAME
1	2.410	BB	0.0448	19.91486	5.92147	0.00038	
2	2.508	BV	0.0510	25.71357	6.61474	0.00048	
3	2.572	VV	0.0311	11.64721	5.33608	0.00022	

Shemsa Naturals

GC/MS Raporu

4	2.650	VV	0.0407	117.54298	42.98090	0.00221	
5	2.760	VB	0.0476	21.48481	6.74529	0.00040	
6	2.941	BB	06.94	28.46693	5.63312	0.00054	
7	3.157	BB	0.0371	369.04068	151.99478	0.00695	
8	3.672	BV	0.0958	285.70706	42.16858	0.00538	
9	3.735	VV	0.0771	227.03217	38.30909	0.00428	
10	3.912	VV	0.1434	370.73050	32.13002	0.00698	
11	4.092	VV	0.0595	107.80772	25.62559	0.00203	
12	5.181	BB S	0.2122	1.48383e6	8.41296e4	27.95251	ALPHA PINENE
13	5.715	BV T	0.0827	7198.96094	1112.38354	0.13561	
14	5.739	VB T	0.1617	1.07975e4	1112.73828	0.20341	
15	6.389	BV	0.0805	1.99303e4	2978.54053	0.37545	
16	6.537	VV	0.1974	5.63389e4	3454.97241	1.06132	BETA PINENE
17	7.331	VV	0.1264	2.58347e4	2463.19556	0.48668	
18	7.399	VV	0.0682	1.39122e4	2528.48826	0.26208	
19	7.438	VV	0.1031	2.16422e4	2486.86499	0.40770	
20	7.683	VV	0.1526	3.79332e4	3094.55908	0.71459	
21	8.783	VB S	0.2752	2.71659e6	1.16885e5	51.17543	LIMONENE
22	9.317	BV X	0.0945	1.54121e5	2.20164e4	2.90335	
23	9.721	VV X	0.1014	4.87995e4	6543.78516	0.91929	
24	10.048	VV X	0.1060	2.17045e5	2.60528e4	4.08871	
25	10.145	VV X	0.0633	3.80173e4	8652.90527	0.71617	
26	10.355	VB X	0.0798	1878.58032	347.91757	0.03539	
27	10.729	BV	0.0561	18.52442	4.416674	0.00035	
28	10.953	VV	0.1027	745.40509	104.17746	0.01404	
29	11.168	VV	0.0651	44.98490	11.05790	0.00085	
30	11.386	VV	0.0641	104.96220	25.03862	0.00198	
31	11.519	VV	0.0907	85.13120	14.20583	0.00160	
32	11.693	VB	0.0852	96.10052	17.63579	0.00181	
33	12.024	BV	0.0852	3280.51733	594.71954	0.06180	
34	12.163	VV	0.0875	1.22742e4	2147.40186	0.23122	

Shemsa Naturals

GC/MS Raporu

35	12.492	VB	0.1319	700.29327	76.86088	0.01319	
36	12.857	BV	0.1095	393.04602	53.62868	0.00740	
37	13.109	VV	0.0850	1177.78857	211.32784	0.02219	
38	13.387	VV	0.0951	1330.95544	200.28081	0.02507	
39	13.586	VV	0.1365	3655.44556	373.70834	0.06886	
40	13.844	VV	0.1138	1768.31201	214.48109	0.03331	
41	14.065	VV	0.0802	202.71194	37.80493	0.00382	
42	14.253	VV	0.1403	2291.97363	239.77071	0.04318	
43	14.517	VV	0.1133	2118.61011	276.81577	0.03991	
44	14.799	VV	0.1191	1511.48596	191.89082	0.02847	
45	15.198	VV	0.1446	1.91446e5	1.95524e4	3.60648	LINYL ACETETE
46	15.314	VV S	0.0559	8.93163e4	2.25176e4	1.68255	
47	15.385	VB S	0.1148	8181.35107	11887.95483	0.15412	
48	15.556	BV X	0.0661	120.23975	25.54397	0.00227	
49	15.655	VV X	0.0860	452.12192	78.99428	0.00852	
50	15.854	VV X	0.0690	913.44116	207.33971	0.01721	
51	16.017	VV X	0.0914	3539.10815	547.46527	0.06667	
52	16.238	VV T	0.0668	67.94518	16.10329	0.00128	
53	16.380	VV T	0.0727	466.23260	101.69172	0.00878	
54	16.529	VV X	0.0845	69.04508	12.04001	0.00130	
55	16.826	VV T	0.0886	1077.69666	177.08171	0.02030	
56	17.043	VV T	0.0981	466.45425	67.59689	0.00879	
57	17.258	VV T	0.0952	1644.86121	237.57639	0.03099	
58	17.390	VV T	0.0762	631.61102	125.85372	0.01190	
59	17.548	VV T	0.0853	5464.60742	989.05383	0.10294	
60	17.910	VV T	0.0881	4.21691e4	7141.41162	0.79438	
61	18.105	VV T	0.0674	1.34963e4	3061.97852	0.25425	
62	18.234	VV T	0.0716	719.11890	155.24768	0.01355	
63	18.357	VV T	0.0968	221.99850	30.84771	0.00418	
64	18.633	VV T	0.0746	445.23935	91.20198	0.00839	

Shemsa Naturals

GC/MS Raporu

65	18.805	VV T	0.0776	6812.44434	1344.13293	0.12833	
66	18.921	VV T	0.0594	1070.81274	268.05704	0.02017	
67	19.014	VV T	0.0771	1964.77771	375.04074	0.03701	
68	19.384	PV T	0.0686	51.21535	11.36075	0.00096	
69	19.673	PV T	0.0714	2630.65894	570.15051	0.04956	
70	19.895	VV T	0.0855	585.06628	100.55801	0.01102	
71	20.142	PV T	0.0592	28.53953	7.71492	0.00054	
72	20.461	PV T	0.0724	2929.04126	623.20496	0.05518	
73	20.641	VV T	0.0651	758.01508	180.05121	0.01428	
74	20.896	PV T	0.0710	482.83917	105.49051	0.00910	
75	21.133	PV T	0.1126	108.57245	12.69127	0.00205	
76	21.314	VV T	0.0544	15.85584	5.02327	0.00030	
77	21.472	PV T	0.0888	49.79013	8.34945	0.00094	
78	21.723	PV T	0.0564	13.36630	3.71316	0.00025	
79	21.943	PV T	0.1532	169.04266	14.54151	0.00318	
80	22.190	PV T	0.0413	9.64807	3.74135	0.00018	
81	22.303	PV T	0.0859	180.48209	30.81838	0.00340	
82	22.449	VV T	0.0518	30.84297	9.60960	0.00058	
83	22.651	PV T	0.0724	770.70935	169.14676	0.01452	
84	22.952	PV T	0.0774	410.91061	78.14030	0.00774	
85	23.247	PV T	0.0733	1234.80957	258.81863	0.02326	
86	23.493	PV T	0.0738	74.04034	15.83336	0.00139	
87	23.636	VV T	0.0630	469	116.42667	0.00884	
88	23.959	VV T	0.1046	108.41489	14.53383	0.00204	
89	24.326	VV T	0.0768	3.38536E4	6498.81885	0.63774	
90	24.666	VV T	0.0741	275.21719	55.25838	0.00518	
91	24.962	VV T	0.0681	285.74298	62.07404	0.00538	
92	25.188	VV T	0.0674	127.79648	29.93897	0.00241	
93	25.374	VV T	0.0902	279.85928	49.30991	0.00527	

Shemsa Naturals

GC/MS Raporu

94	25.536	VVT	0.1003	661.75336	93.30980	0.01247	
95	25.805	VV T	0.0819	271.66602	50.55293	0.00512	
96	26.075	VV T	0.1201	174.62024	20.52076	0.00329	
97	26.375	VV T	0.0796	400.09998	73.44444	0.00754	
98	26.544	VV T	0.0663	44.30679	9.38781	0.00083	
99	26.670	VV T	0.0795	739.70081	139.51758	0.01393	
100	26.947	VV T	0.0684	72.63672	15.69920	0.00137	
101	27.040	VV T	0.0622	52.39832	12.38613	0.00099	
102	27.262	VB T	0.0967	250.81561	36.24189	0.00472	
103	27.702	BV	0.0943	99.80059	15.51073	0.00188	
104	27.826	VV	0.1257	163.21947	18.72740	0.00307	
105	28.042	VB	0.1132	129.87051	15.34214	0.00245	
106	28.556	BB	0.0850	222.49394	40.42815	0.00419	
107	28.940	BB	0.0747	53.23745	11.18878	0.00100	
108	29.797	BB	0.1277	96.66721	11.04310	0.00182	
109	31.878	BB	0.1370	60.68393	6.54432	0.00114	
110	37.795	BB	0.1514	85.72926	8.16131	0.00161	
111	39.906	BB	0.1352	251.97533	27.21670	0.00475	
112	44.111	BB	0.1677	161.34152	11.90772	0.00304	
113	45.012	BB	0.2167	452.50430	25.88662	0.00852	

Totals:

5.30839e6 3.57010e5