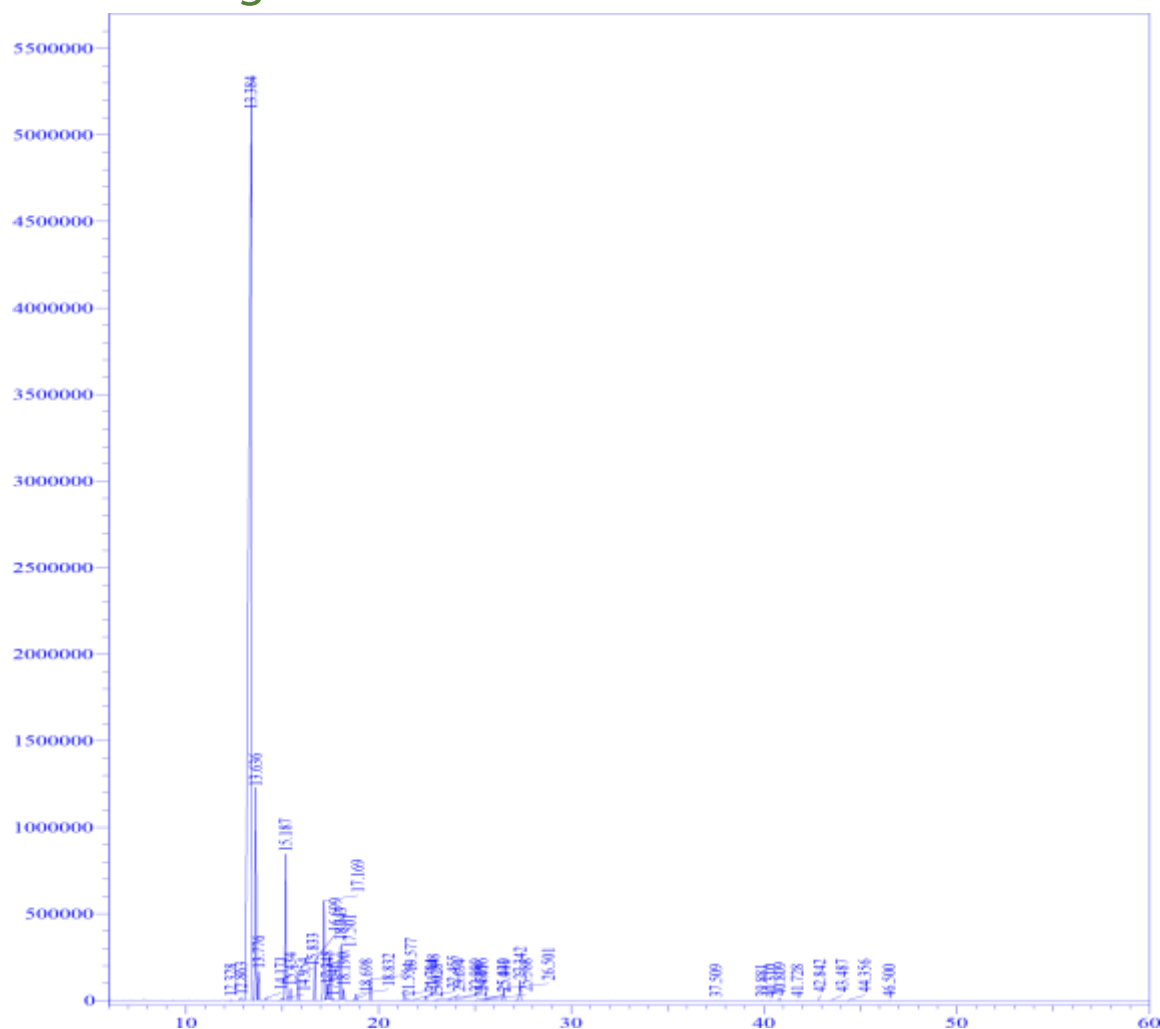


# Shemsa Naturals

## GC/MS Raporu

Essential oil	Botanical Name	Material	CAS#	Origin	Method
Frankincense oil	Boswelia Serrata	Herbal oil	8016-36-2	INDIA	Steam Distillation

### Chromatogram



### CompoundList

Peak#	RetTime	Area	Area%	
1	12.328	16925	0.0235	
2	12.863	107404	0.1492	
3	13.384	54753494	76.0813	Alpha Thujene
4	13.636	4199836	5.8358	
5	13.776	468534	0.6510	
6	14.171	43772	0.0608	
7	14.954	25641	0.0356	
8	15.187	3516522	4.8863	
9	15.434	227028	0.3155	
10	15.833	537997	0.7476	
11	16.699	884640	1.2292	
12	17.169	2431330	3.3784	
13	17.348	287079	0.3989	
14	17.501	925208	1.2856	
15	17.646	27268	0.0379	
16	18.043	1388297	1.9291	
17	18.190	222894	0.3097	
18	18.698	11977	0.0166	
19	18.832	132033	0.1835	
20	19.577	480368	0.6675	
21	21.348	132330	0.1839	
22	21.554	35612	0.0495	
23	21.794	12658	0.0176	
24	22.455	98878	0.1374	
25	22.909	11840	0.0165	
26	23.028	17180	0.0239	
27	23.694	20723	0.0288	
28	24.016	28263	0.0393	
29	25.040	6858	0.0095	



# Shemsa Naturals

## GC/MS Raporu



30	25.319	7374	0.0102	
31	25.439	6192	0.0086	
32	25.588	20944	0.0291	
33	26.501	308469	0.4286	
34	27.342	473707	0.6582	
35	37.509	2606	0.0036	
36	39.881	7048	0.0098	
37	40.310	8762	0.0122	
38	40.809	55908	0.0777	
39	41.728	8184	0.0114	
40	42.842	2800	0.0039	
41	43.487	4950	0.0069	
42	44.356	2556	0.0036	
43	46.500	4973	0.0069	
Total		71967062	100.0000	