

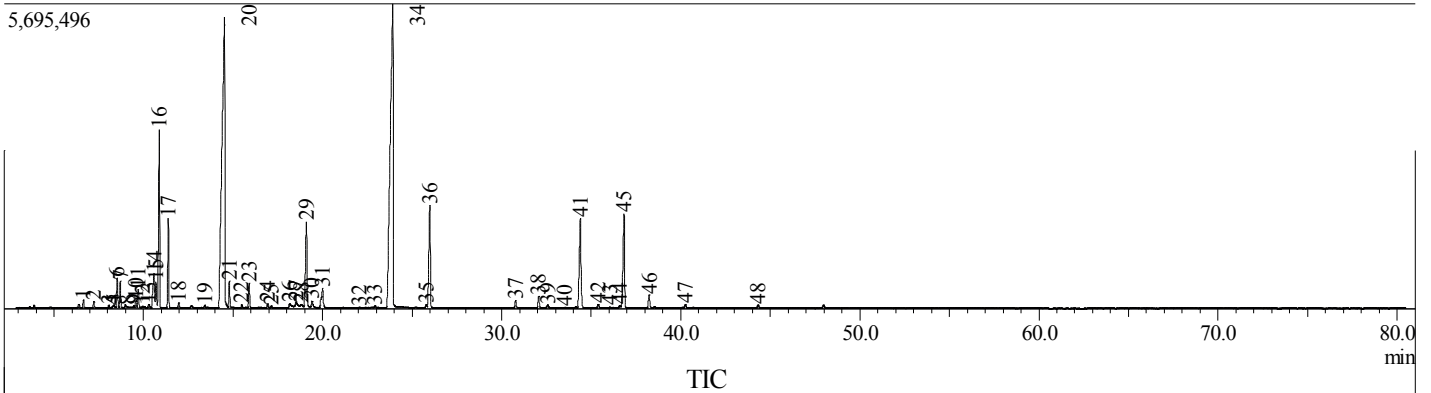
# Shemsa Naturals

## GC/MS Raporu

Essential oil	Botanical Name	Material	CAS#	Origin	Method
Lavender oil	Lavandula angustifolia	Herbal oil	8000-28-0	TURKEY	Steam Distillation

Chromatogram C:\GCMSsolution\Data\Aroma-5MS\2020\SHEMSA LAVANTA\SHEMSA LAVANTA YAG.qgd

TIC



Peak#	R. Time	Name	Area	Area%
1	6.637	.ALPHA.-PINENE, (-)-	579457	0.27
2	7.210	Camphene	478789	0.22
3	8.049	Sabinene	187586	0.09
4	8.260	2-.BETA.-PINENE	99835	0.05
5	8.329	1-Octen-3-ol (CAS) Oct-1-en-3-ol	273957	0.13
6	8.517	3-Octanone (CAS) EAK	2371989	1.11
7	8.698	.beta.-Myrcene	1949989	0.91
8	9.080	3-Octanol (CAS) n-Octan-3-ol	56268	0.03
9	9.435	l-Phellandrene	130764	0.06
10	9.561	.DELTA.3-Carene	509210	0.24
11	9.704	1-Hexyl acetate	1426983	0.67
12	9.926	.ALPHA.-TERPINOLENE	110322	0.05
13	10.280	Cymol	345240	0.16
14	10.576	.beta.-Phellandrene	4015647	1.88
15	10.690	EUCALYPTOL (1,8-CINEOLE)	2063887	0.97
16	10.883	cis-Ocimene	14305443	6.70
17	11.384	.BETA. OCIMENE Y	6362162	2.98
18	11.959	.gamma.-Terpinene	418462	0.20
19	13.405	Cyclohexene, 1-methyl-4-(1-methylethylidene)-	179678	0.08
20	14.528	LINALOOL	59887386	28.07