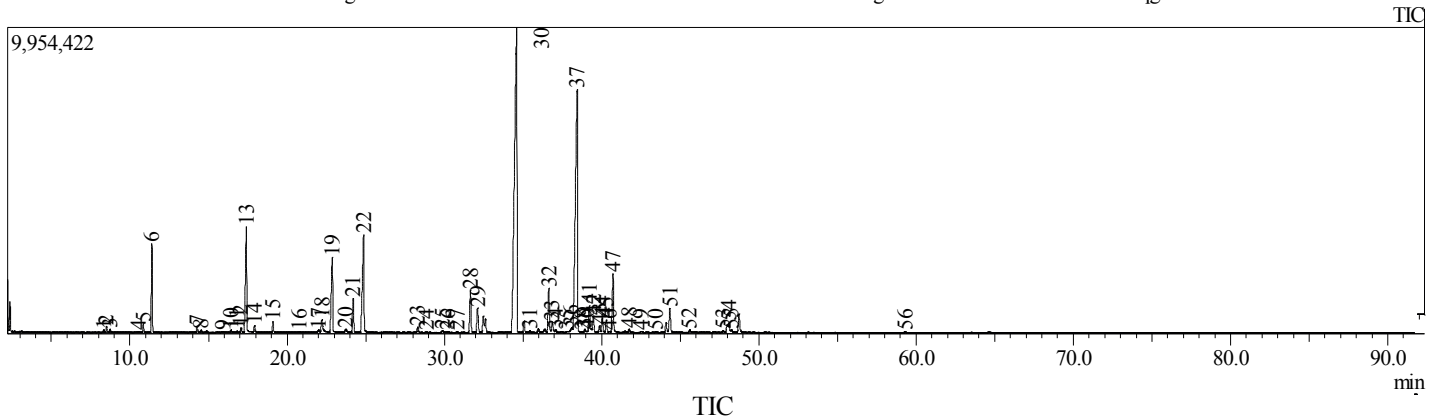


Shemsa Naturals

GC/MS Raporu

Essential oil	Botanical Name	Material	CAS#	Origin	Method
Melissa oil	Melissa officinalis	Herbal oil	8014-71-9	TURKEY	Steam Distillation

Chromatogram C:\GCMSsolution\Data\Aroma-5MS\2020\hasan aslanca getirdi\shemsa\shemsa melisa of.qgd



Peak#	R. Time	Name	Area	Area%
1	8.320	1 OCTEN 3 OL	371025	0.11
2	8.505	6-METHYL-5-HEPTEN-2-ONE B	832864	0.25
3	8.715	.beta.-Myrcene	418454	0.13
4	10.526	l-Limonene	100018	0.03
5	10.852	cis-Ocimene	1099440	0.33
6	11.399	BETA. OCIMENE Y	11517248	3.45
7	14.260	Linalool	891997	0.27
8	14.510	n-Nonanal	360033	0.11
9	15.902	2,4,6-Octatriene, 2,6-dimethyl-, (E,Z)-	161714	0.05
10	16.419	TRANS-CARAN, 4,5-EPOXI-	368687	0.11
11	16.789	2,6-Octadienal, 3,7-dimethyl-	214903	0.06
12	17.052	1-Cyclohexene-1-acetaldehyde, .alpha.,2-dimethyl- (CAS)	700997	0.21
13	17.405	-Citronellal	18501155	5.54
14	17.916	-p-Mentha-1(7),8-dien-2-ol	922442	0.28
15	19.095	Verbenol	1638834	0.49
16	20.784	1-Tetradecanol	137425	0.04
17	21.980	Nerol	391639	0.12
18	22.201	.beta.-Citronellol	2761386	0.83
19	22.871	NERAL	15235552	4.56
20	23.714	Nerol	646666	0.19
21	24.201	Methyl citronellate	5728514	1.72
22	24.865	GERANIAL	22934037	6.87